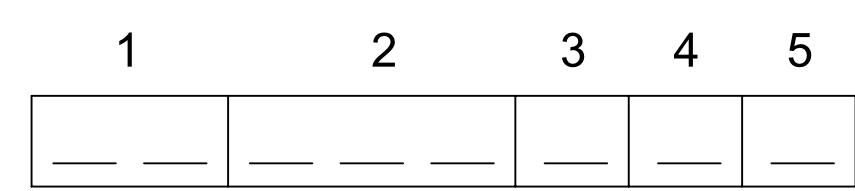


Voltage / Current : 28V / 7.5A  
Voltage / Current : 14V / 15A

- \* Knob turning torque : 0.15 Nm±0.04Nm
- \* Voltage drop : 300 mV
- \* Operating temperature : from -40°C to +85°C
- \* Product life : 25,000 cycles
- \* IP Protection Grade : IP53 (knob side)

Item	Designation	Material	Hardness	Coating	Color	Weight (g)
a	Body	PA6 GF30	N/A	N/A	Black	8.89
b	Base	PA6.6 GF30			Black	4.82
c	Plug	CuZn37 R380	105 - 140 HV	Ag 2µm±1µm	N/A	0.95
d	Knob without Circular Lens	PA6 GF30			Black	4.42
e	Knob with Circular Lens	PA6 GF30			Black	4.40
f	Circular Lens	PC	N/A		See Selection 2 option	0.15
g	Knob with Knurled Lens	PA6 GF30			Black	3.26
h	Knurled Lens	PC	N/A		See Selection 2 option	0.11
i	Hexagonal Nut (2mm)	Al Alloy	110 - 120 HB		N/A	0.55
j	Hexagonal Nut (3mm)				N/A	0.93
k	Knurled Nut				Black	0.95
m	Connector 6 pole, H=24 mm	PC+ABS	N/A		Black	6.04
n	Connector 6 pole, H=11.5 mm					2.72
p	Connector 6 pole, H=11.5 mm					2.70
r	Connector 5 pole, H=24 mm					5.48

ORDERING SCHEME



- 1- Electrical Diagram
- 2- Knob Types
- 3- Nut Type 1
- 4- Nut Type 2
- 5- Illumination

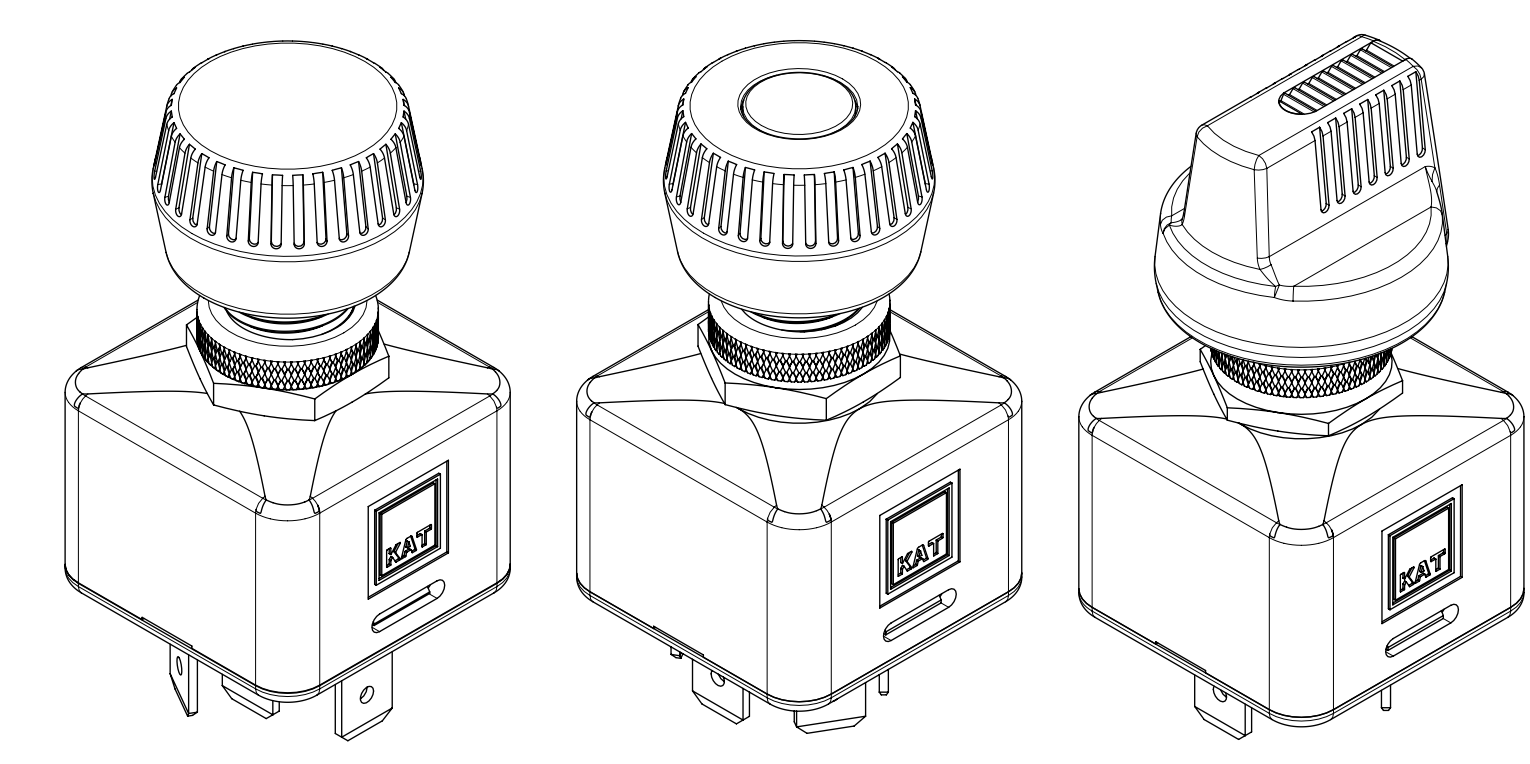
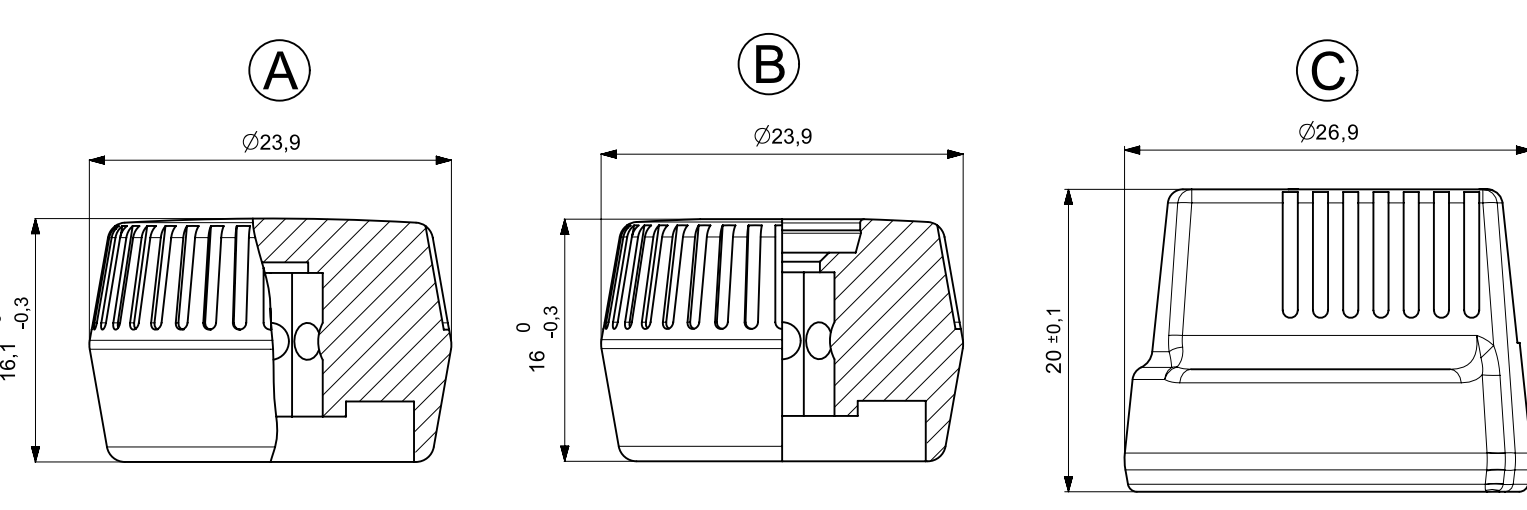
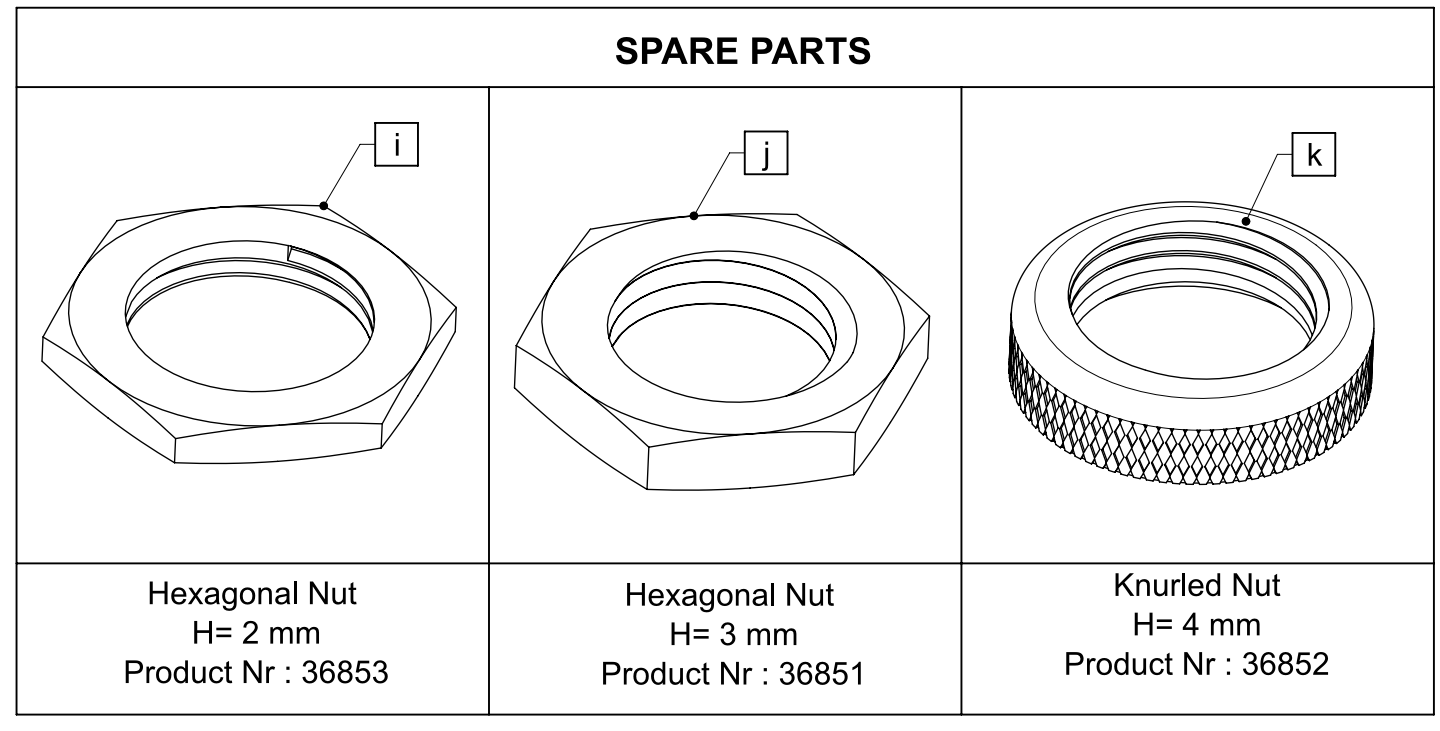
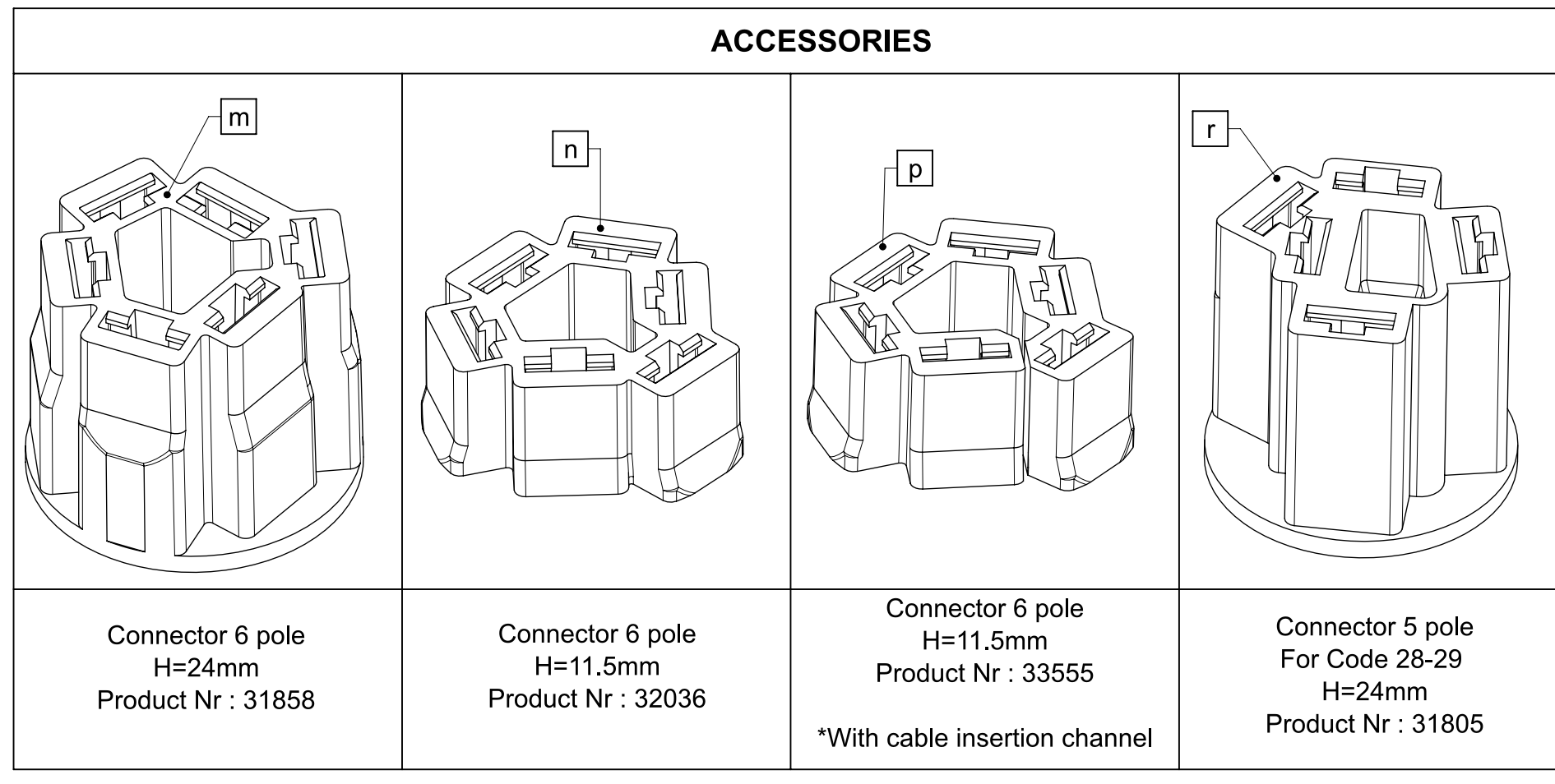
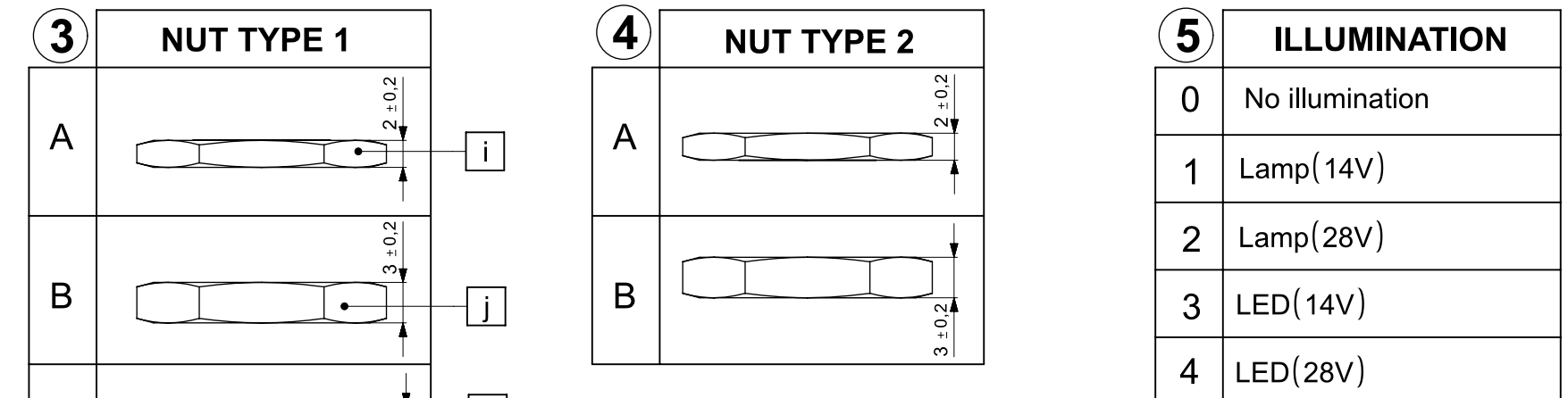
ELECTRICAL DIAGRAM

Note: If illuminated version is selected then knob type has to be selected among types 2&3

Code	Layout	Position	Illumination	Self-Recolling
01	A-B	Off-On	N/A	No
02	A-B	Off-On	N/A	Yes
03	A-B	Off-On	Lamp LED E (c) F (+) 14V E (c) F (+) 14V	No
04	A-B	Off-On	Lamp LED E (c) F (+) 28V E (c) F (+) 28V	No
05	A-B	Off-On	Lamp LED E (c) F (+) 14V E (c) F (+) 14V	Yes
06	A-B	Off-On	Lamp LED E (c) F (+) 28V E (c) F (+) 28V	Yes
07	A-B A-C	On-On	N/A	No
08	A-B A-C	On-On	Lamp LED E (c) F (+) 14V E (c) F (+) 14V	No
09	A-B A-C	On-On	Lamp LED E (c) F (+) 28V E (c) F (+) 28V	No
10	A-B A-C	On-On	Lamp LED E (c) F (+) 14V E (c) F (+) 14V	Yes
11	A-B A-C	On-On	Lamp LED E (c) F (+) 28V E (c) F (+) 28V	Yes
12	A-B A-C	On-On	N/A	Yes
13	A-B A-C	Off-Off-On	N/A	No
14	A-B A-C	Off-Off-On	N/A	Yes
15	A-B A-C	Off-Off-On	Lamp LED E (c) F (+) 14V E (c) F (+) 14V	No
16	A-B A-C	Off-Off-On	Lamp LED E (c) F (+) 28V E (c) F (+) 28V	No
17	A-B A-C	On-Off-Off	N/A	No
18	A-B A-C	On-Off-Off	N/A	Yes
19	A-B A-C	On-Off-Off	N/A	Yes
20	A-B A-C	On-Off-Off	Lamp LED E (c) F (+) 14V E (c) F (+) 14V	No
21	A-B A-C	On-Off-Off	Lamp LED E (c) F (+) 28V E (c) F (+) 28V	No
22	A-B A-C	On-Off-Off	Lamp LED E (c) F (+) 14V E (c) F (+) 14V	Yes
23	A-B A-C	On-Off-Off	Lamp LED E (c) F (+) 28V E (c) F (+) 28V	Yes
24	A-B A-C A-D	On-On-On	N/A	No
25	A-B A-C A-D	On-On-On	N/A	Yes
26	A-B A-C A-D	On-On-On	Lamp LED E (c) F (+) 14V E (c) F (+) 14V	No
27	A-B A-C A-D	On-On-On	Lamp LED E (c) F (+) 28V E (c) F (+) 28V	No
28	①-1 ①-2 ①-3 ①-4	Off-Off-On	N/A	No
29	①-1 ①-2 ①-3 ①-4	Off-On-On-On	N/A	No

2 KNOB TYPES

Note	For only non-illuminated versions	For only illuminated versions	
Code	Image	Code	Image
A01		B01	
A02		B02	
A03		B03	
A04		B04	
A05		B05	
A06		B06	
A07		B07	
A08		B08	
A09		B09	
A10		B10	
A11		B11	
A12		B12	
A13		B13	
A14			
A15			
A16			
A17			
A18			
A19			
A20			
A21			
A22			
A23			
A24			
A25			
A26			
A27			



Rev. No.	Rev. Date	Rev. Name	Revision Details	Rev. No.
1	16.08.2007	KABAHASANOGLU	First issue in sheet and fully revised sheet. The reference was set for the dimensions.	N/A
2	17.02.2008	KABAHASANOGLU	Dimensions were adjusted for the customer.	N/A
3	21.02.2008	KABAHASANOGLU	The type was added to literature table in literature 1.	N/A
4	04.02.2010	YILMAZ YUKERELI	The literature of sheet was changed.	N/A
5	20.03.2010	YILMAZ YUKERELI	Dimensional changes were added.	N/A
6	14.09.2010	YILMAZ YUKERELI	Operating temperature values are updated.	N/A
7	18.02.2014	YILMAZ YUKERELI	Operating temperature values are updated.	N/A
8	14.03.2018	KABAHASANOGLU	Material values are added.	N/A
9	06.09.2018	YILMAZ YUKERELI	Technical drawing is added.	N/A
10	01.02.2017	YILMAZ YUKERELI	Technical drawing is updated.	N/A
11	13.03.2018	YILMAZ YUKERELI	The part is updated.	N/A
12	23.12.2018	KABAHASANOGLU	LED type is added to circuit diagram.	N/A
13	24.02.2019	KABAHASANOGLU	There are changes in terminal marking in order path.	N/A

Accessories	Part No.	Description
Connector 6 pole H=24mm <td>31858 <td>Product Nr : 31858</td> </td>	31858 <td>Product Nr : 31858</td>	Product Nr : 31858
Connector 6 pole H=11.5mm <td>32036 <td>Product Nr : 32036</td> </td>	32036 <td>Product Nr : 32036</td>	Product Nr : 32036
Connector 6 pole H=11.5mm <td>33555 <td>Product Nr : 33555</td> </td>	33555 <td>Product Nr : 33555</td>	Product Nr : 33555
Connector 5 pole H=24mm <td>31805 <td>Product Nr : 31805</td> </td>	31805 <td>Product Nr : 31805</td>	Product Nr : 31805

SIEMENS NX (".prt")

Material: SAP code / Part marking code

Part No: 9510

Part Name: 9510

Part Date: 16.08.2007

Part Description: 9510

Part Drawing: 9510

Part Project code: K11

Part Name: 9510

Part Date: 16.08.2007

Part Description: 9510

Part Drawing: 9510

Part Project code: K11

Part Name: 9510

Part Date: 16.08.2007

Part Description: 9510

Part Drawing: 9510

Part Project code: K11

Part Name: 9510

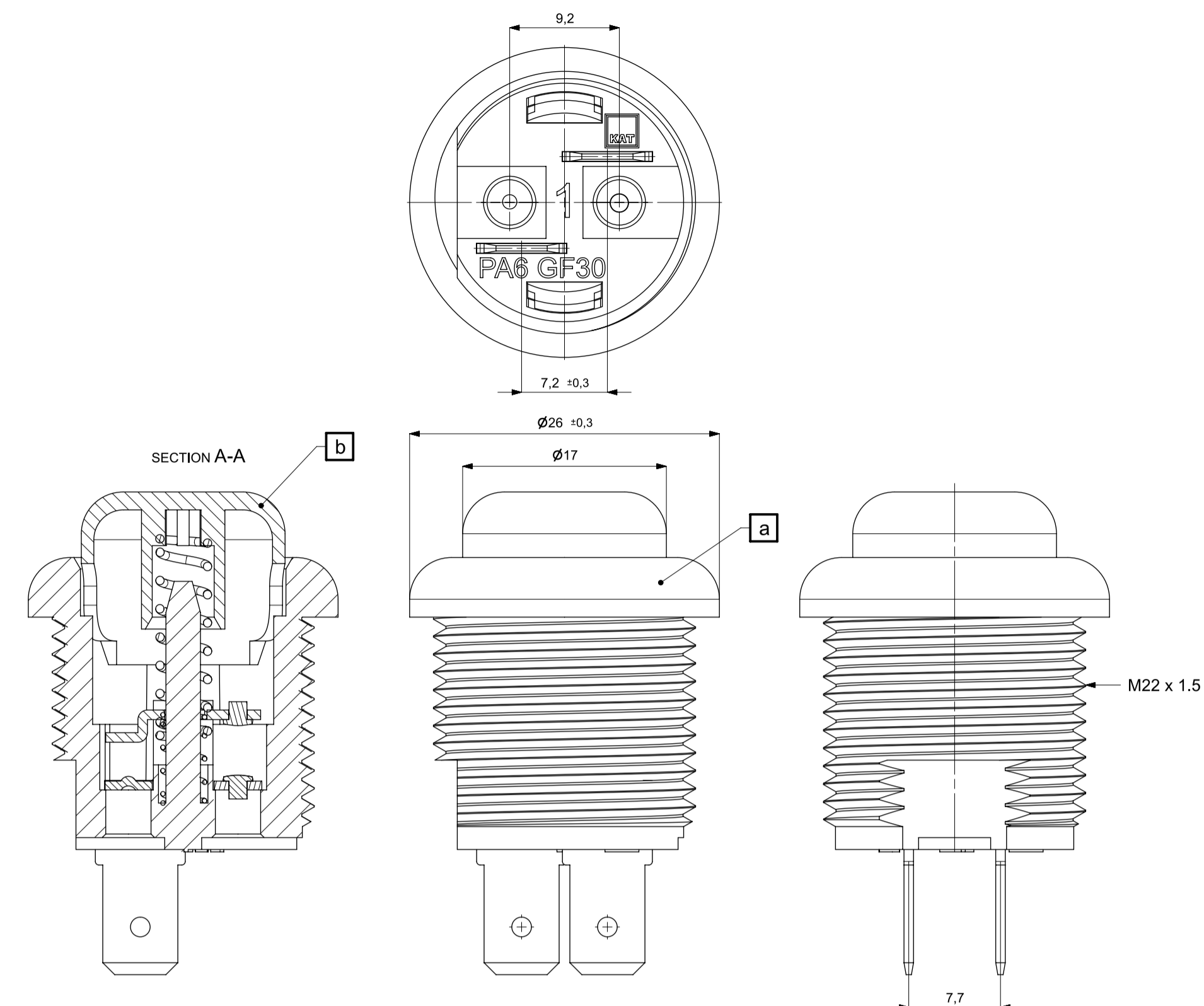
Part Date: 16.08.2007

Part Description: 9510

Part Drawing: 9510

Part Project code: K11

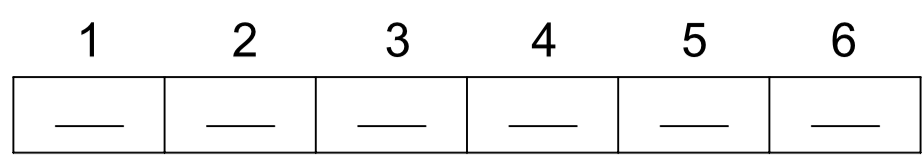
Notlar/ Notes



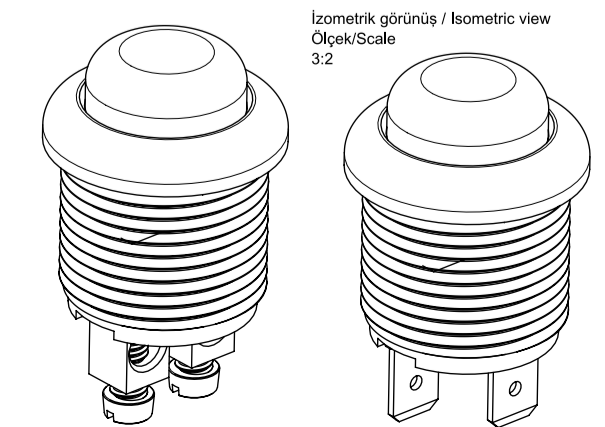
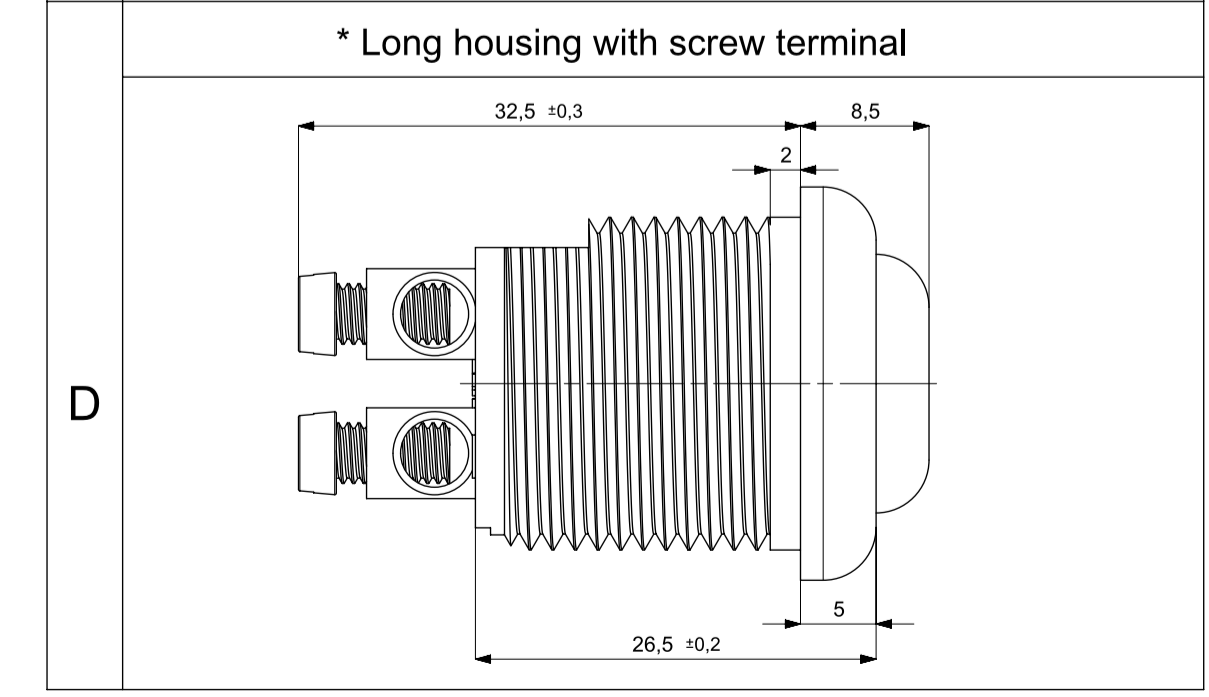
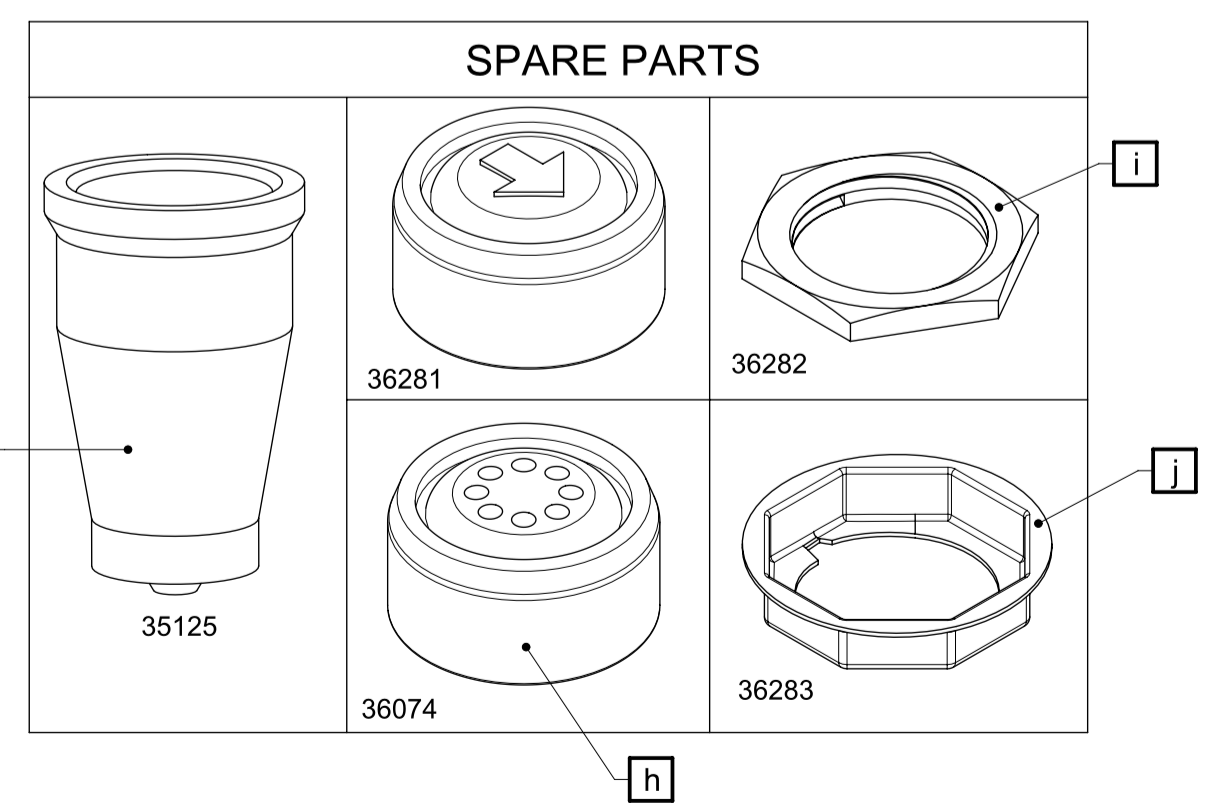
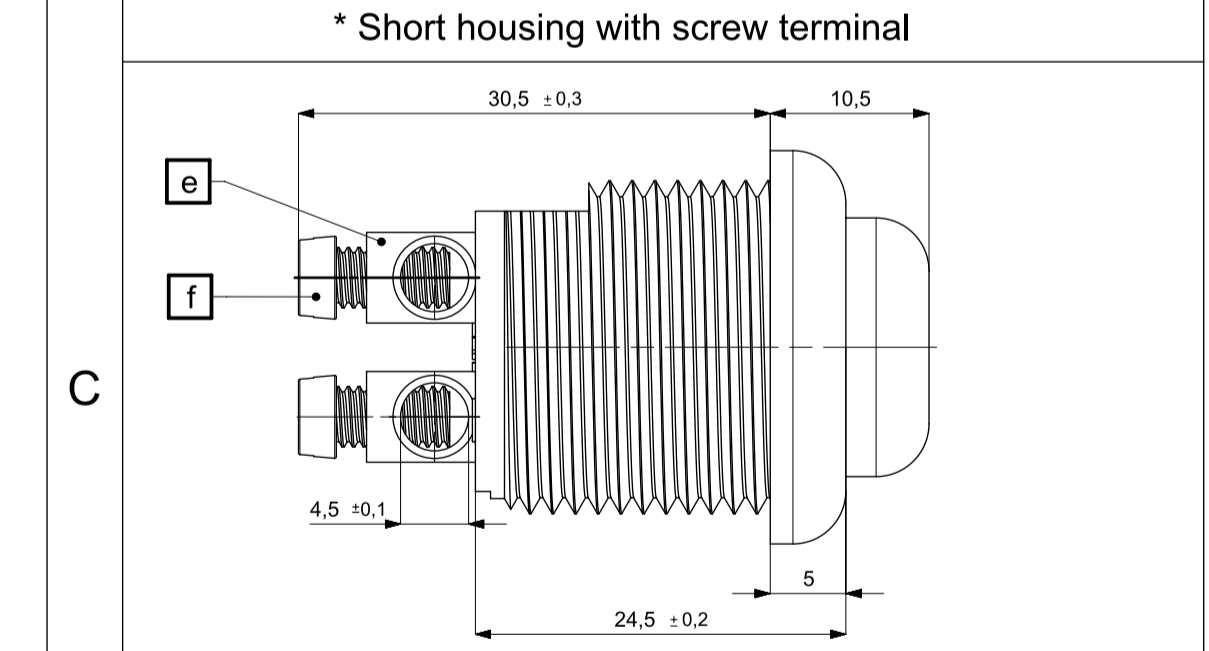
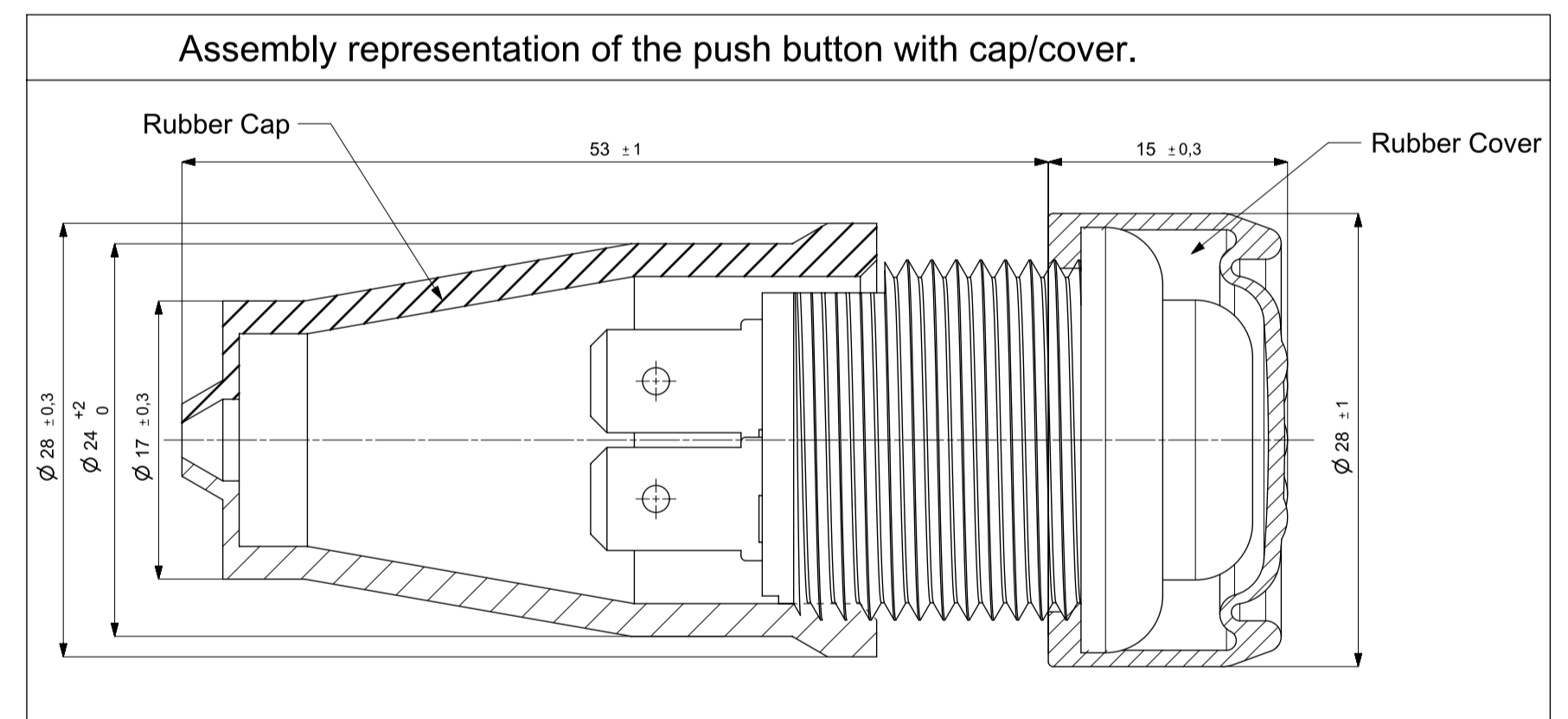
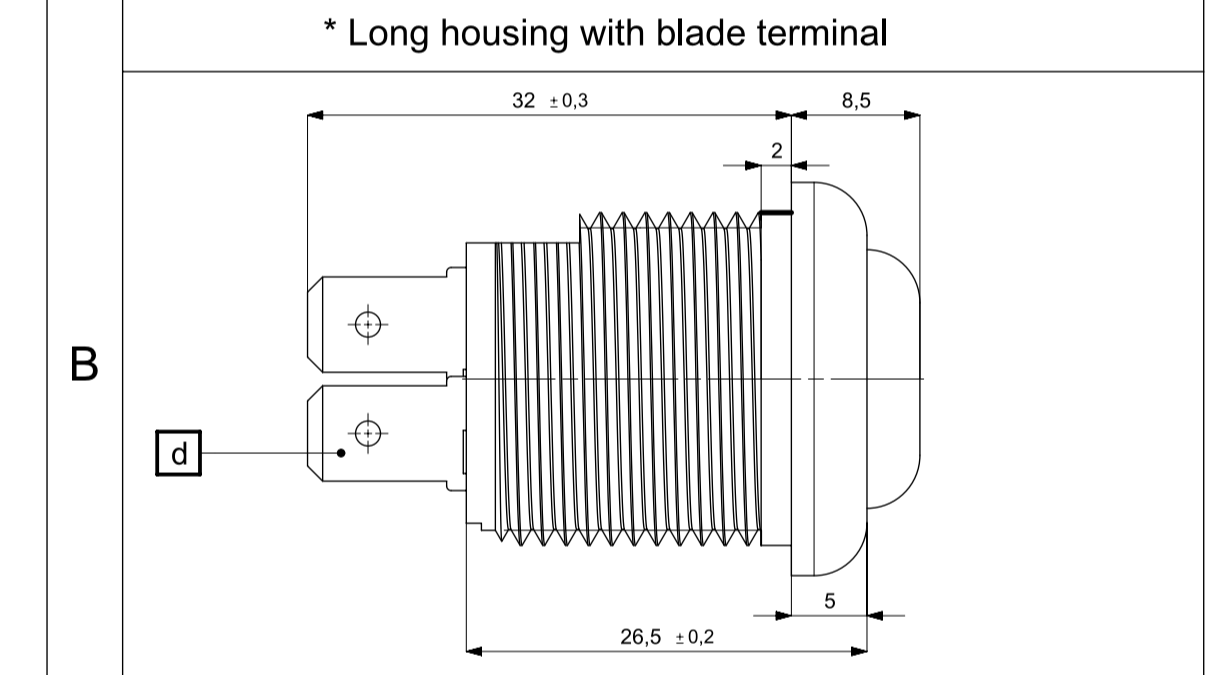
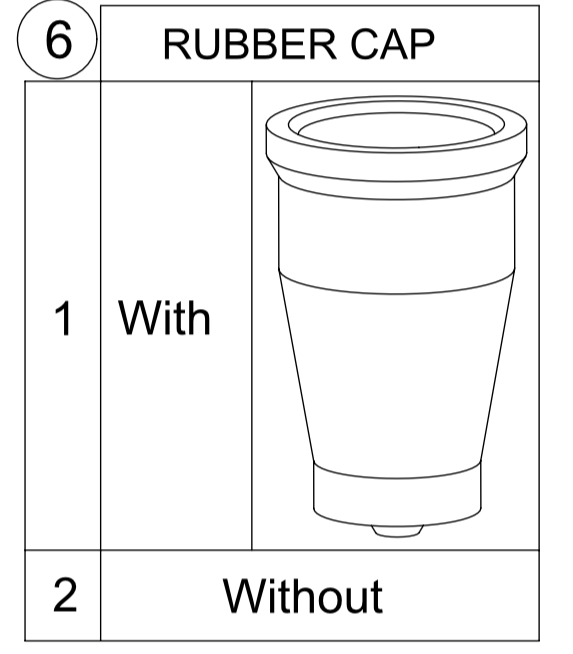
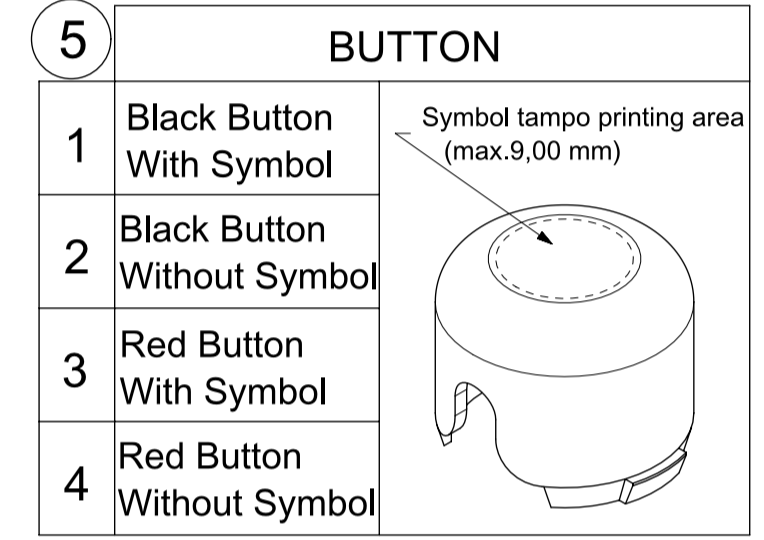
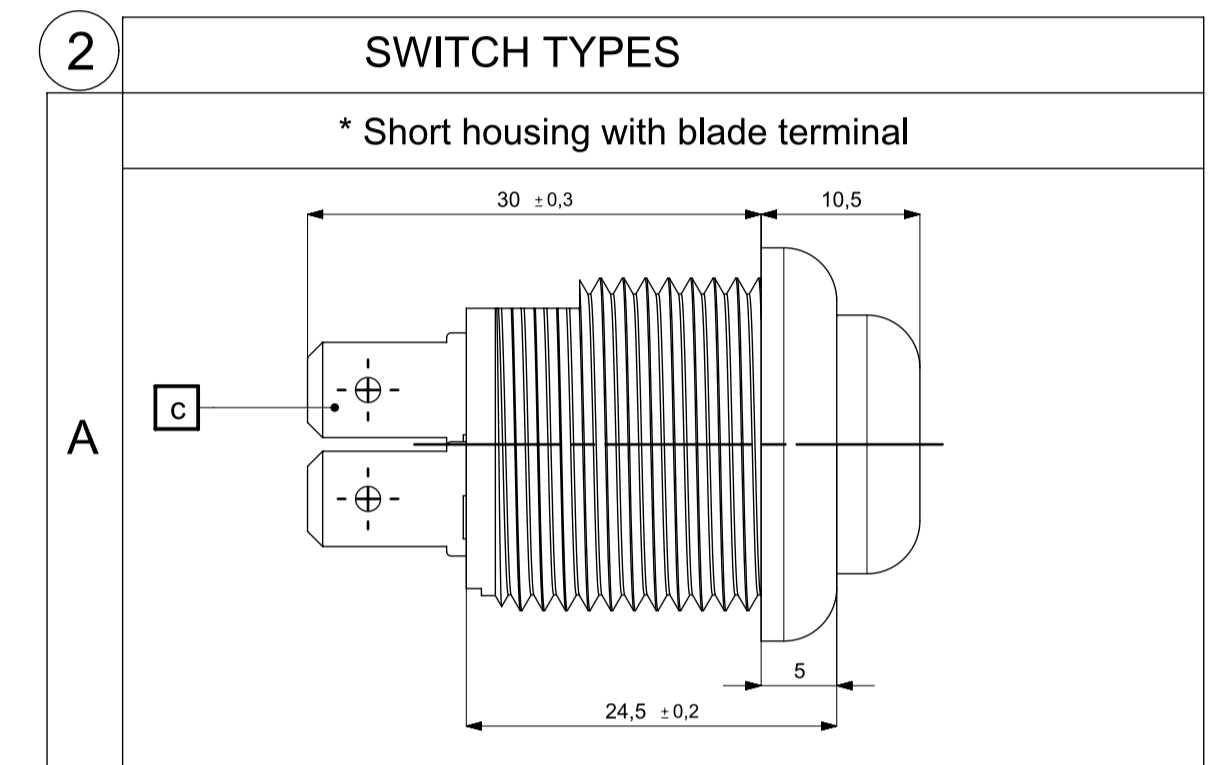
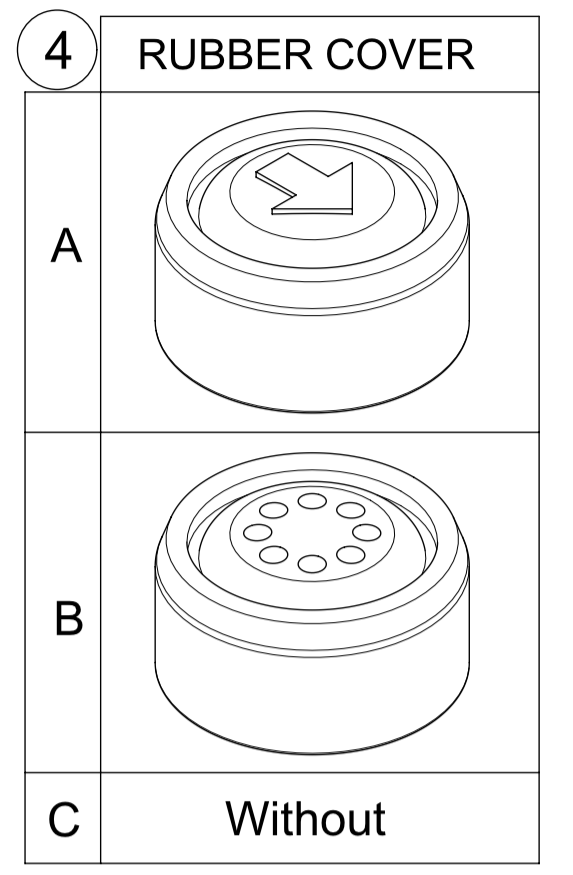
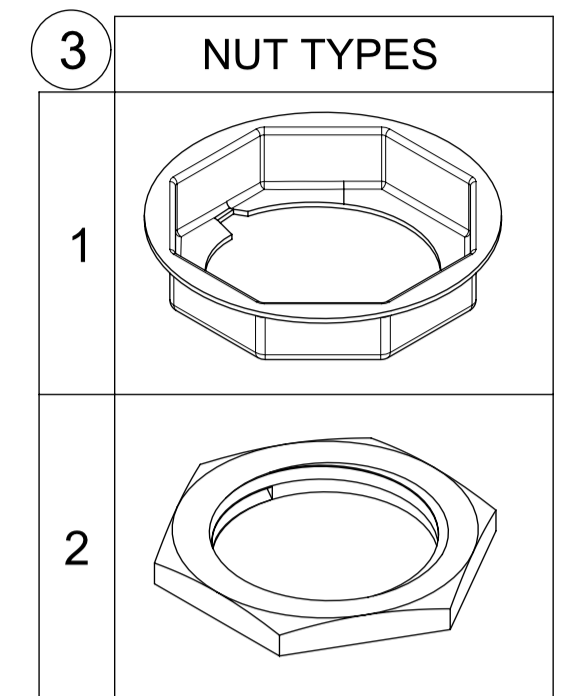
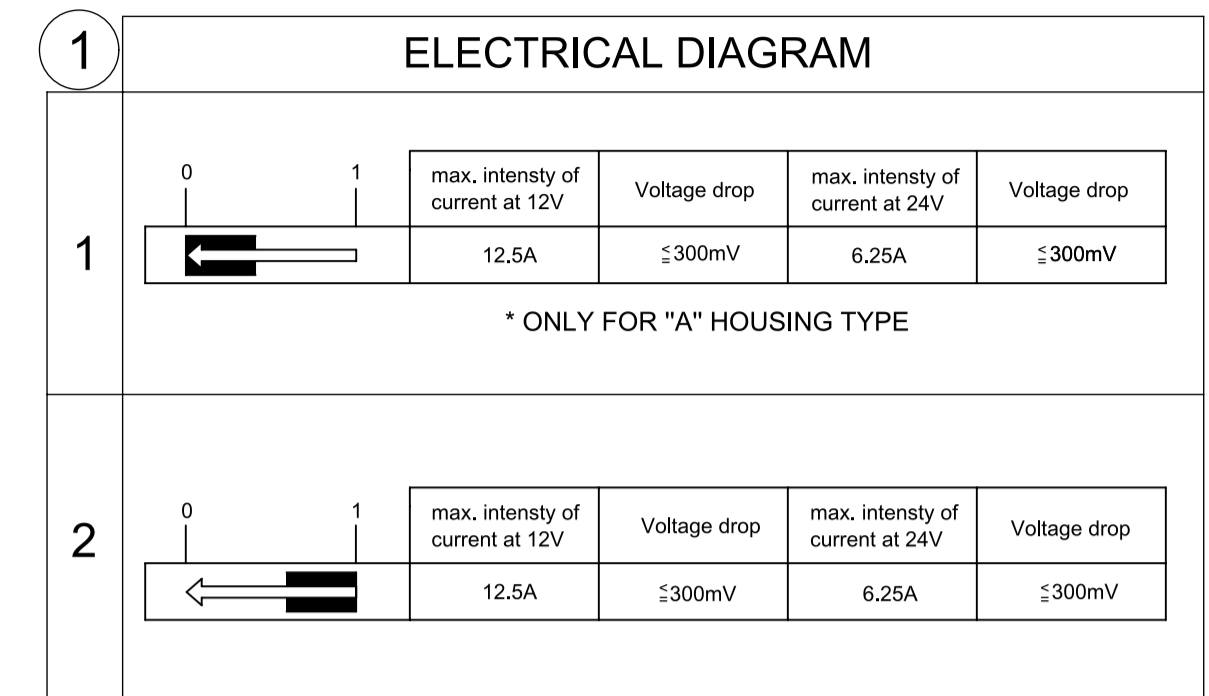
Voltage : 12 V / 24 V  
 Temperature range : from -40°C to +90°C  
 Max. current : 12,5 A/12V or 6,25A/24V  
 Max. voltage drop : 300 mV  
 Stroke : 4,4 ± 0,2 mm  
 Actuation point : 1,6 ± 0,6 mm  
 Force at actuation point : 9 ± 1 N  
 Life cycle : min. 25.000 cycles on/off  
 Momentum of nut : Max. 3 Nm  
 Protection level acc. to (DIN40050)  
 Protection Button side (With cover) IP66  
 Protection Button side (Without cover) IP 40  
 Protection Terminal side (With cap) IP 64  
 Protection Terminal side (Without cap) IP 20

Item	Designation	Material	Plating	Color	Weight (g)
a	Housing	PA 6 GF30	N/A	Black	5,6
b	Button	POM		Black	1,4
c	Short plug	F38	N/A	N/A	0,85
d	Long plug				1,05
e	Socket	CuZn39Pb3 (DIN17660)	N/A	N/A	1,85
f	Screw	DIN 84	Zn 5	N/A	0,95
g	Rubber Cap	Neopren, 60 Shore A	N/A	Black	3,35
h	Rubber Cover	Neopren 55 Shore A	N/A	Black	8,7
i	Nut 3mm	Al Mg SiSn Bi	N/A	N/A	2,25
j	Nut 6,5mm	St 3 Lg Fe	Zn 8	N/A	3,2

### ORDERING SCHEME



- 1- Electrical Diagram
- 2- Switch Types
- 3- Nut Types
- 4- Rubber Cover
- 5- Button
- 6- Rubber Cap



Rev. No	Konum Section	Tarih Date	İsim Name	Revision tarihi Revision description	Talep No Order Nr.
a	N/A	15.03.2011	C.TOPRAKBEKAR	Button figure option is added.	N/A
b	N/A	21.06.2011	FERİT TUTAR	Button order option "Red" is added.	N/A
c	N/A	26.06.2012	C.TOPRAKBEKAR	Specification order criteria changes.	N/A
d	N/A	15.07.2016	ÖLGEN TIRAZCI	The template is updated.	N/A
e	N/A	08.01.2018	K.KARABULUT	Technical drawing updated.	N/A

Ö	Taslak Draft	○	Prototip Prototype	○	On seri Pre-series	●	Seri Series
KAT: burda birerlek kullanmak kayda bir koruyama hakları sınırlanmış olarak imalatçıya malik hakları için basıncı hakları ve burunda birerlek kullanmak kayda bir hakları hakları dahi olarak sınırlanmış hakları. Koruyama ve imalatçı veya sınırlanmış hakları dahi olarak sınırlanmış hakları (tıydam) hakları KAT'a aittir. KAT reserved all rights, including without limitation rights of invention, copyright, rights to names and the right to make for industrial property rights. All rights of use and exploitation including the right to copy and disseminate or distribute reside with us.							
CAD sistemi ve yönetim kodu/CAD system and administration code				NX 11 ( *.prt )			
Malzeme / SAP kod / Markalama kodu Material / SAP code / Part marking code				Renk / Color See table See table			
Ağırlık (g) / Weight				Sertlik (HV) Hardness			
Çekme mukavemeti (N/mm²) Tensile strength				N/A			
Kaplama malzemesi/Coating material				See table			
Kaplama kalınlığı (µm)/Coating thickness				N/A			
Çizen / Drawn		İsmin Name		Tarih / Date		İmza / Signature	
Tasarım Sorumlusu Responsible design		Murat TUTAR		22.05.2008		KOT41	
Kontrol / Checked		Cem KABAŞANOĞLU		22.05.2008		Proje kod Project code	
Güvenlik Dök. Safety Doc.		N/A		Proje Adı Project Name		ISO 128	
Ölçek/Scale				Resim No Drawing No			
5:2 3:2				95111			
Normal ölçülerde belirtilmeyen toleranslar için genel toleranslar General tolerances for nominal dimensions without specified tolerance				DIN 7168 mS			

