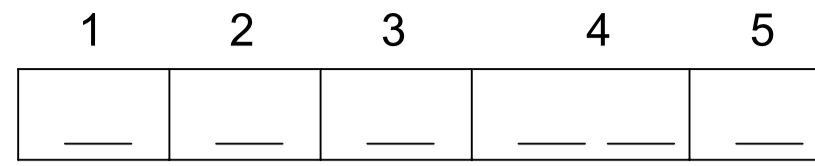


Notlar/ Notes

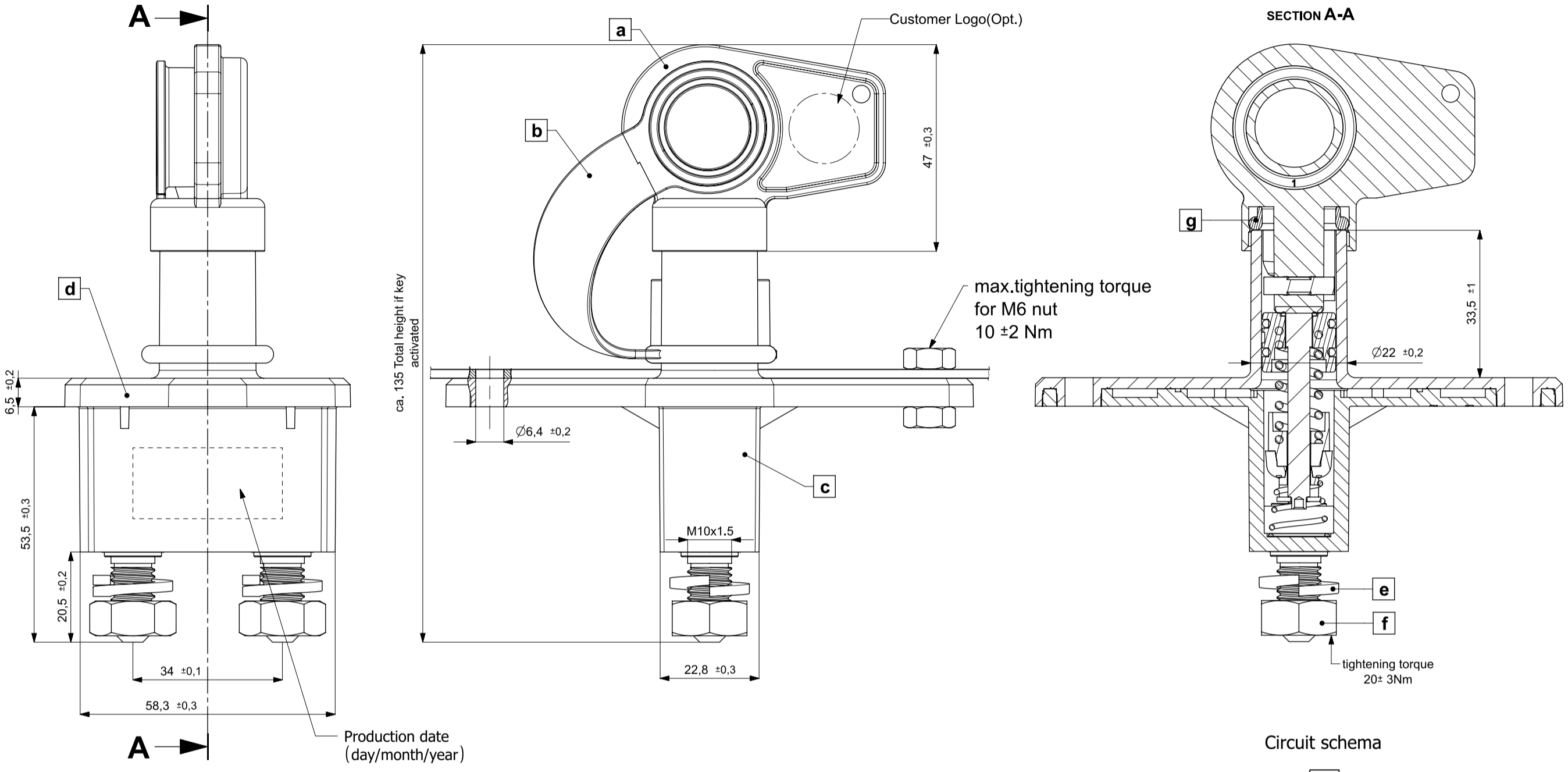
### ORDERING SCHEME



- 1\_ Battery Separation Switch Type / Mounting Panel Opening
- 2\_ Electrical Values
- 3\_ Nut Type
- 4\_ Accessories
- 5\_ Key Logo

| Ölçü Tanımı / Description of measure | Adet / Number |
|--------------------------------------|---------------|
| CC Ölçü / CC Dim.                    | N/A           |
| SC Ölçü / SC Dim.                    | 3             |
| Kontrol Ölçü / Control Dim.          | N/A           |

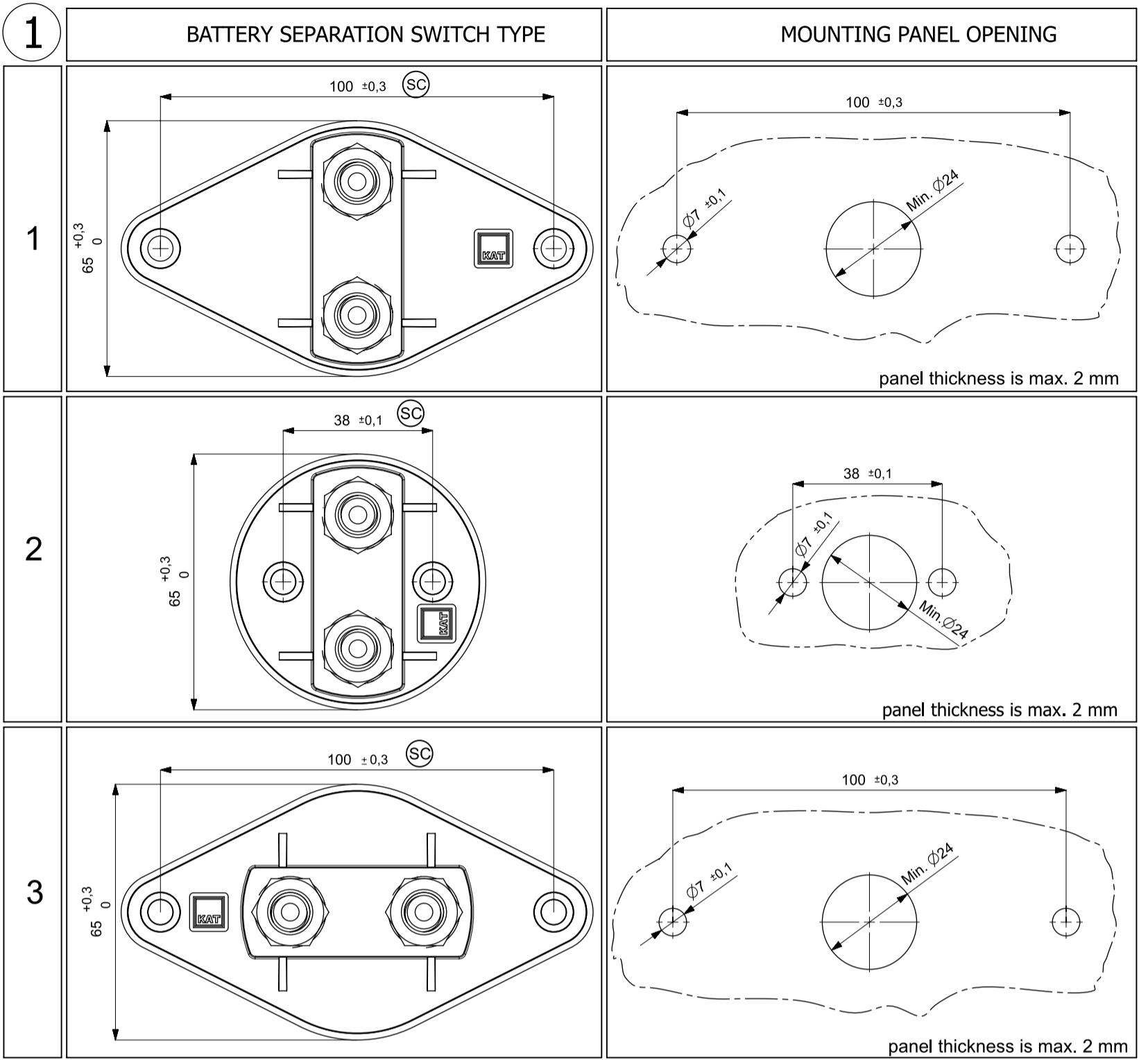
| Rev. No. / Rev. No. | Konum / Section | Tarih / Date | İsminin / Name  | Revizyon tanımı / Revision description  | Talep No. / Order No. |
|---------------------|-----------------|--------------|-----------------|---|-----------------------|
| a                   | N/A             | 14.05.2007   | YILBAYKANDERE   | Weather add-on, terminal drawing signed system is revised according to Customer Special Characteristics Table     | N/A                   |
| b                   | N/A             | 20.02.2008   | YILBAYKANDERE   | Material information changes Washer and Nut.  | N/A                   |
| c                   | N/A             | 21.01.2011   | FERİDAT TUTANAR | Washer and nut material A2 70 XN is added.  | N/A                   |
| d                   | N/A             | 10.11.2014   | K.KARABALUT     | Technical drawing updated   | N/A                   |
| e                   | N/A             | 07.12.2014   | K.KARABALUT     | Ordering scheme is updated, Option 4 is updated, Option 5 is added, Accessory items are added in the accessories. | N/A                   |
| f                   | L4              | 24.05.2019   | K.KARABALUT     | Materials of LOCK ON/OFF and Lock OFF file are updated to PASERIP20 (UL94 V-0) was PC-20 (UL94 V-0)               | N/A                   |
| g                   | MN3             | 30.03.2023   | K.KARABALUT     | Locking force are added in the accessories, 30220130052 and 30220130056, address new system KAT codes.            | N/A                   |
| h                   | CD-16           | 15.09.2023   | K.KARABALUT     | Voltage drop value is updated.  | N/A                   |
| i                   | CD-16           | 16.01.2025   | K.KARABALUT     | Connection lock hardware information has been added to the picture.   | N/A                   |



- \* Electrical life : 5000 cycles @50A
- \* Mechanical life : 10000 cycles
- \* Operation temp. : from -40° C to +85° C
- \* Key torque : max. 1,6Nm
- \* Total operation angle : 103° ± 2°
- \* IP Protection class : IP69K

| Item | Designation               | Material              | Color | Weight (g)   |
|------|---------------------------|-----------------------|-------|--------------|
| a/a* | Key (Std./ Lockable opt.) | PA6 GF30              | Red   | 18,2 / 22    |
| b    | Protection cap            | PVC                   | Black | 9,4          |
| c    | Base (Oval/Round)         | PC GF20 (UL94 V-0)    | Grey  | 95,3 / 89,75 |
| d    | Body (Oval/Round)         | PC GF20 (UL94 V-0)    | Black | 26,7 / 19,8  |
| e    | Washer (DIN 127)          | A2-60/70 XN           | N/A   | 2,3          |
| f    | Nut                       | A2-60/70 XN           | N/A   | 9,9          |
| g    | O-ring                    | NBR                   | N/A   | 6,1          |
| h    | Lock ON-OFF               | PA6 GF30 ( UL94 V-0 ) | Black | 17,6         |
| i    | Lock OFF                  | PA6 GF30 ( UL94 V-0 ) | Black | 16,1         |

| Delivery Volume |                           |                   |
|-----------------|---------------------------|-------------------|
| Item            | Designation               | Number            |
| 1               | Battery Separation Switch | 1                 |
| 2               | Key                       | 1                 |
| 3               | Protection cap            | 1                 |
| 4               | Washer                    | 2                 |
| 5               | Nut                       | 2 or 4 (Optional) |



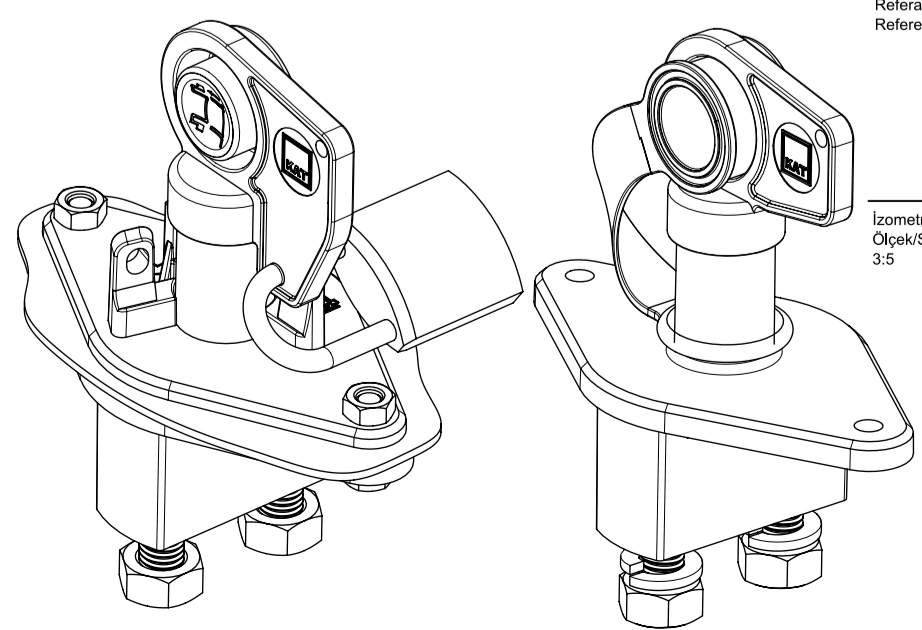
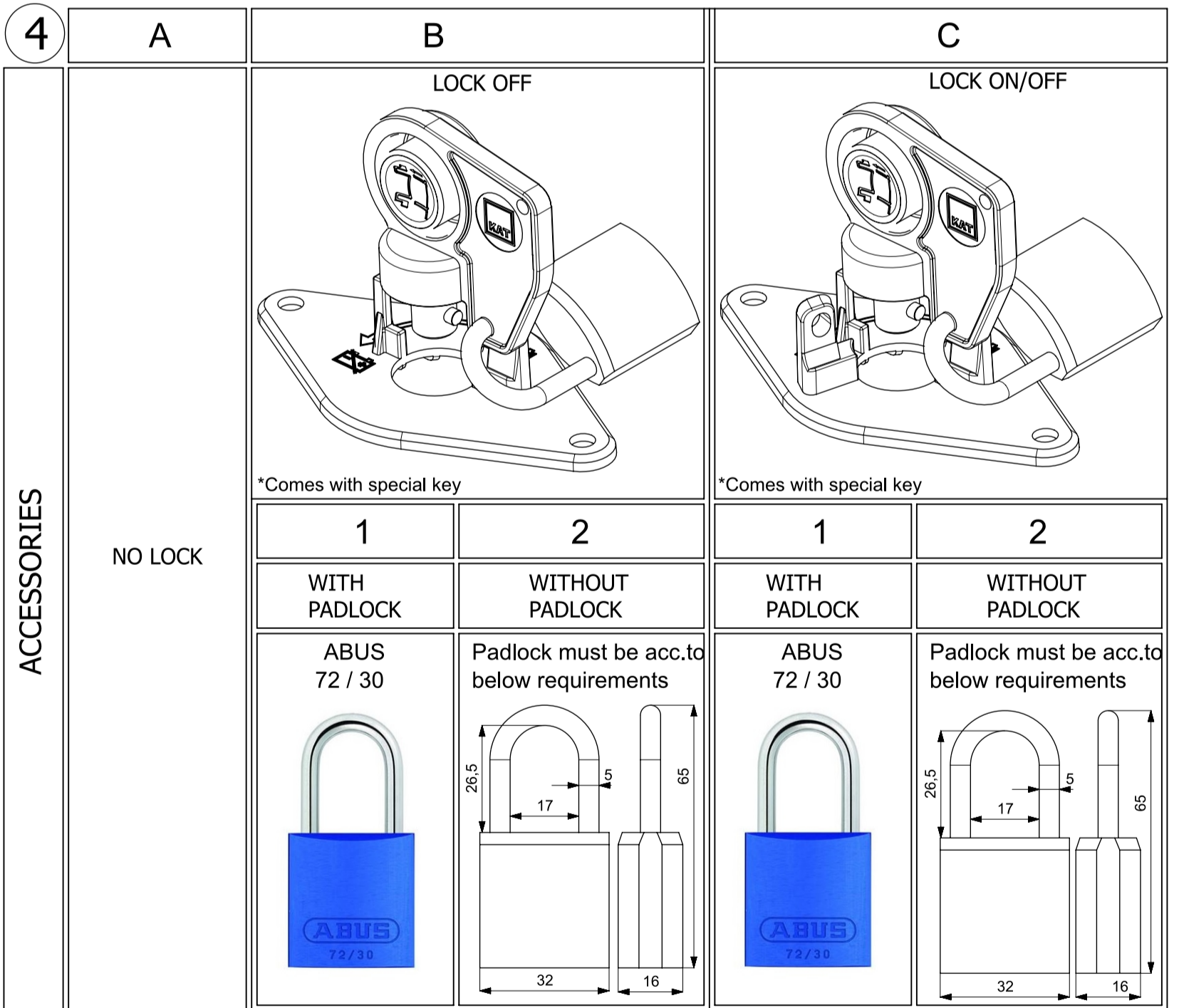
\* Product fulfills requirements best when it is mounted underneath panel.

| ELECTRICAL VALUES                      |  |
|--|--|
| <b>(WITH ACTIVATION UNDER LOAD)</b>    |  |
| Max.Voltage                            | : 24V  |
| Continuous load                        | : 250A   |
| Short term                             | : 2500A for 5 sec.                                     |
| Can be activated                       | : max.50 times under 250A                              |
| Voltage drop                           | : max.50 mV under 250A                                 |
| Connection bolt material               | : CuZn39Pb3 / EN 12164-R500<br>+Ag plated ( 3 micron ) |
| Contact material                       | : AgCu3  |
| Connection bridge material             | : Cu+Ag plated ( 3 micron )                            |
| <b>(WITHOUT ACTIVATION UNDER LOAD)</b> |  |
| Max.Voltage                            | : 24V  |
| Continuous load                        | : 250A   |
| Short term                             | : 2000A for 5 sec.                                     |
| Voltage drop                           | : max.100 mV under 250A                                |
| Connection bolt material               | : CuZn39Pb3 / EN 12164-R500                            |
| Contact material                       | : Cu   |
| Connection bridge material             | : Cu   |

| NUT TYPE |           | Quant. |
|----------|-----------|--------|
| 1        | (DIN 934) | 2      |
| 2        | (DIN 439) | 4      |

| KEY LOGO |                   |
|----------|-------------------|
| 1        | Without Logo      |
| 2        | With KAT Logo     |
| 3        | Customer Specific |

| SPARE PARTS  |  |   |   |
|--|--|---|---|
|  |  |   |   |
| With KAT Logo 302200130008 (33419)<br>Without Logo 34487<br>Customer Specific ASK. | With KAT Logo 36326<br>Without Logo 302200130050 (36327)<br>Customer Specific ASK. | *Comes with special key<br>With KAT Logo Without padlock 36503<br>Without Logo Without padlock 36505<br>With KAT Logo With padlock 36507<br>Without Logo With padlock 36509<br>Customer Specific ASK. | *Comes with special key<br>With KAT Logo Without padlock 36502<br>Without Logo Without padlock 36504<br>With KAT Logo With padlock 36506<br>Without Logo With padlock 36508<br>Customer Specific ASK. |
|  |  |   |   |
| 302200130052_Washer (DIN 127)  | 302200130053_Nut M10 (DIN 934)   | 302200130011 (33648)  | 36510   |
|  |  |   | 36511   |
| 302200130056_Nut M10 (DIN 439)   |  |   |   |



| Parça Durumu / Part Status  |                       | Seri / Series                  |                            |
|---|-----------------------|--------------------------------|----------------------------|
| KAT, bir firmaya ait bir ürünün kopyası ile kullanılmasını istemeyenlerdir. Her türlü hakları saklı tutulmuştur. Kopyalama ve dağıtım yapılmaz. Tüm hakları saklıdır. (All rights reserved. All rights of use and exploitation including the right to copy and disseminate or distribute remain with us.) |                       |                                |                            |
| CAD sistem ve yönetim kodu/CAD system and administration code   |                       |                                |                            |
| Malzeme / SAP kod / Markalama kodu / Material / SAP code / Part marking code  |                       | Renk / Color                   |                            |
| See the table   |                       | See the table                  |                            |
| Ağırlık (g) / Weight  | See the table         | Sertlik (HV) / Hardness        |                            |
| Çekme mukavemeti (N/mm²) / Tensile strength   | N/A                   | N/A                            |                            |
| Kaplanma malzemesi / Coating material   | N/A                   | N/A                            |                            |
| Kaplanma kalınlığı (µm) / Coating thickness   | N/A                   | N/A                            |                            |
| Çizen / Drawn   | İsminin / Name        | Tarih / Date                   | İmza / Signature           |
| 22.03.2007  | Kadirye Karabulut     | 22.03.2007                     |                            |
| Tasarım Sorumlusu / Responsible design  | Canan Topraklıtar     | 22.03.2007                     |                            |
| Kontrol / Checked   | Can KABAŞANOĞLU       | 22.03.2007                     |                            |
| Güvenlik Dök. / Safety Doc.   | N/A                   | Proje Adı / Project Name       | Proje Kodu / Project code  |
|   |                       | BATTERY SEPARATION SWITCH_250A |                            |
| Ölçek / Scale   | Resim No / Drawing No | 95200130001 (95007)            | Boyut Formatı / Sheet Size |
| 1:1   |                       |                                | A1                         |
| 3:5   |                       |                                | 1                          |
| Normal ölçülerde belirtilmeyen toleranslar için genel toleranslar / General tolerances for nominal dimensions without specified tolerances  |                       |                                | ISO 2768                   |